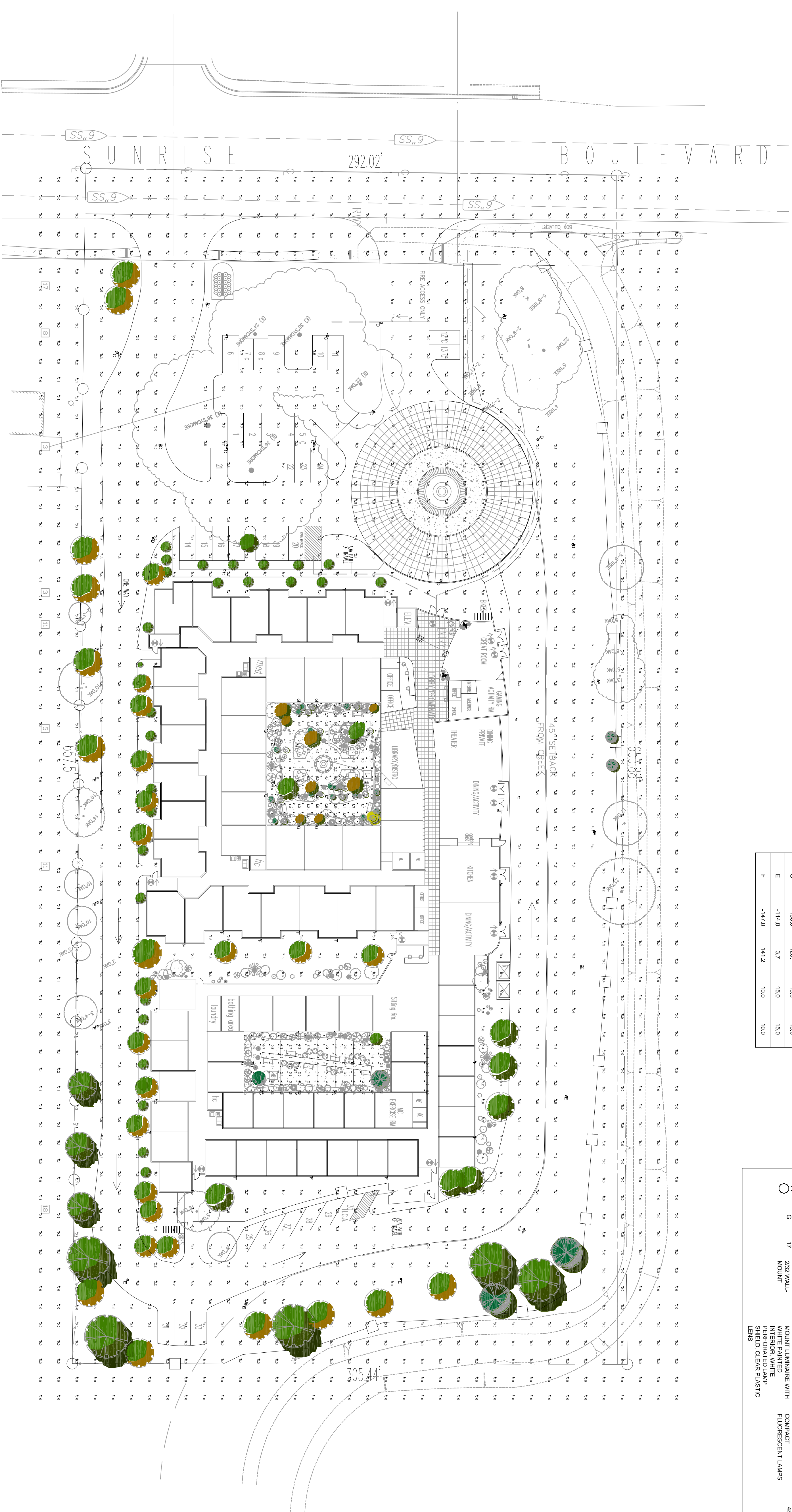


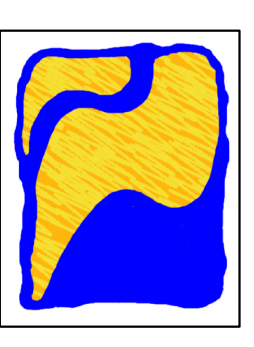
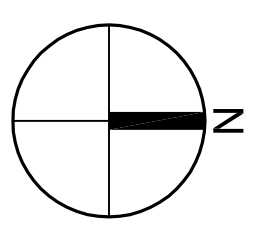
STATISTICS						
Description	Symbol	Avg	Max	Min	Max/Min	Avg/Min
DRIVESHAFT/BLDG PERIMETER	+	19.6	65.6	0.0	N/A	N/A
LEFT COURTYARD	+	19.6	93.6	0.0	31.0	6.3
LIGHT TRESPASS	+	0.0	0.0	0.0	N/A	N/A
RIGHT COURTYARD	+	22.6	98.6	0.0	32.7	7.3

LUMINAIRE LOCATIONS			
Label	X	Y	Z
G	-88.8	180.2	7.0
B1	-40.7	198.0	3.5
B1	113.4	110.9	3.5
G	113.3	168.0	7.0
D	-297.4	229.4	15.0
C	-159.0	128.1	15.0
E	-114.0	3.7	15.0
F	-147.0	141.2	10.0

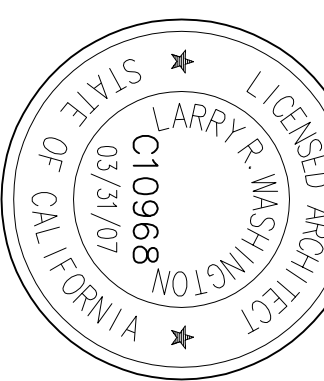
LUMINAIRE SCHEDULE					
Symbol	Label	Qty	Catalog Number	Description	Lumens
○	B1	6	LUMINA WFS- F-42-ROLLAD	ONE 43WATT COMPACT FLUORESCENT LAMP	3200
□	C	11	LITHONIA AS1 150M SRMS SCWA	ARCHITECTURAL ARM-MOUNTED OUTDOOR LUMINAIRE WITH BRAC REFLECTOR	13000
□	D	7	LITHONIA AS1 150M SR3 SCWA	ARCHITECTURAL ARM-MOUNTED OUTDOOR LUMINAIRE WITH BR3 REFLECTOR	13000
□	E	14	LITHONIA AS1 150M SR3 HS	ARCHITECTURAL ARM-MOUNTED OUTDOOR LUMINAIRE WITH BR3 REFLECTOR	13000
○	F	25	LUMINA WFS- M100 WALL-MOUNT	LITREX EQUIPSE WALL MOUNT LUMINAIRE WITH WHITE PAINTED REFLECTOR WHITE PNEUMATIC LAMP SHIELD CLEAR PLASTIC LENS	9000
○	G	17	LUMINA WFS- 232 WALL-MOUNT	LITREX EQUIPSE WALL MOUNT LUMINAIRE WITH WHITE PAINTED REFLECTOR WHITE PNEUMATIC LAMP SHIELD CLEAR PLASTIC LENS	4800



1 SITE PLAN PHOTOMETRIC
SCALE: 1" = 30'-0"



Two Rivers Architects
101 PARKSHORE DRIVE
FOLSOM, CALIFORNIA 95630
PHONE: (916) 932-2323
FAX: (916) 932-2324
WWW.TWORIVERSIDA.COM



These drawings and accompanying specifications as instruments of service are the property of Two Rivers Architects and their use shall be restricted to the original site for which they were prepared. Re-use or reproduction by any other party without the written permission of Two Rivers Architects.

© 2004 Two Rivers Architects
CONSULTANT



REVISIONS
11/25/01

KEY PLAN

PROJECT TITLE
Senior Care of Citrus Heights
John Steitz Enterprises
8220 Sunrise Blvd.
Citrus Heights, CA.

SHEET TITLE
SITE PLAN PHOTOMETRIC
Preliminary Planning

DRAWN BY DLH	CHECKED BY LW
PROJECT NO. 1048	SHEET NO. E1.1
COMPUTER NO.	
DATE 9/23/2008	