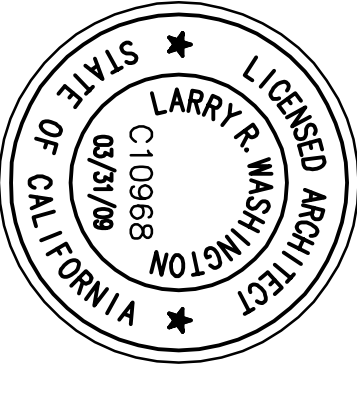


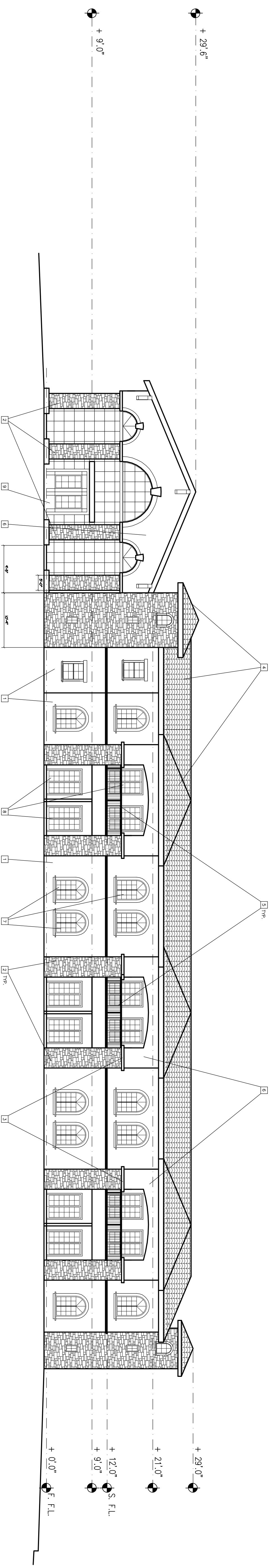


**Two Rivers Architects**  
 13405 FOLSOM BLVD., BLDG. #300  
 FOLSOM, CALIFORNIA 95630  
 PHONE: (916) 358-7555  
 FAX: (916) 358-7556  
 www.tworiversaia.com



These drawings and accompanying specifications are instruments of service prepared by Two Rivers Architects and their use shall be restricted to the original site for which they were prepared. Re-use or reproduction by any other party without the written permission of Two Rivers Architects.

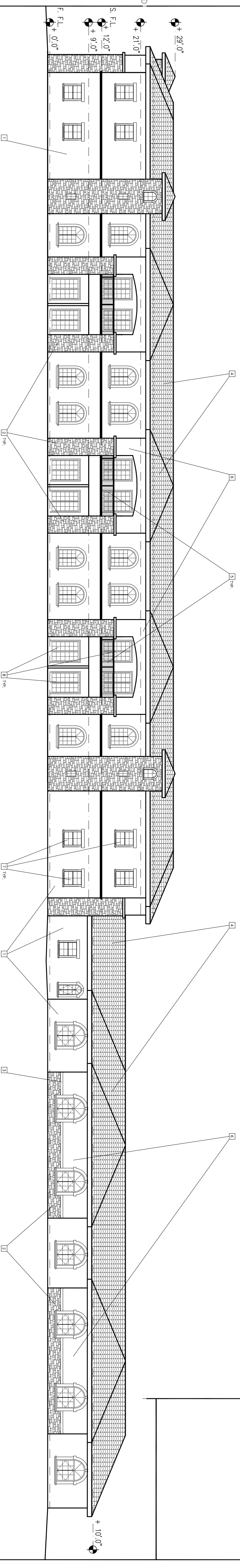
© 2004 Two Rivers Architects  
 CONSULTANT



**WEST ELEVATION**

3/32" = 1'-0"

REVISIONS



**SOUTH ELEVATION**

3/32" = 1'-0"

**KEY NOTES**

- 1 PRIMARY STUCCO COLOR #1
- 2 MASONRY VENER ON PLASTER BASE.
- 3 6" SLOPING SILL CAP TOTAL PERIMETER ON TOP OF MASONRY VENER.
- 4 TILE ROOF
- 5 METAL TRIM
- 6 STUCCO COLOR #2
- 7 SINGLE-HUNG WINDOW
- 8 SLIDING DOOR
- 9 AUTOMATED DOUBLE DOOR

PROJECT TITLE  
**Senior Care  
 Of Citrus Heights**

8220 Sunrise Blvd.  
 Citrus Heights, CA.

SHEET TITLE  
**Elevations  
 Preliminary Planning**

DRAWN BY LW	CHECKED BY LW
PROJECT NO. 1048	SHEET NO. A4.1
COMPUTER NO. 03	DATE 10-06-08